



www.marined.com



WHO WE ARE?

Headquartered in Istanbul, Turkey, NED MARINE is a fully organized marine repair, newbuilding, and conversion contractor staffed by highly qualified and experienced marine engineers. For over 10 years, our aim has been to provide accurate job pricing, cost-effective repair services, and a commitment to quality and reliability—whether for long-term projects or urgent situations.

VISSION

NED MARINE envisions a maritime world where vessels operate at their peak performance, ensuring safety, sustainability, and profitability for our clients and partners. Our vision is to be a trusted global leader in drydock and ship-repair management, continually evolving to meet the evolving needs of the maritime sector. We aim to expand our global footprint, leverage cutting-edge technology, and nurture a culture of excellence to deliver superior solutions and foster enduring relationships with our clients. Through our unwavering commitment to quality, safety, and environmental sustainability, we aspire to drive positive change in the maritime industry, setting the course for a safer and more efficient maritime future.

MISSION

At NED MARINE, our goal is to be the top choice for maritime solutions. We offer exceptional services tailored to client needs. Dedicated to excellence in ship repair, maintenance, and refurbishment, we exceed global expectations with expertise, experience, and quality commitment. With a focus on customers and innovation, we build lasting industry relationships



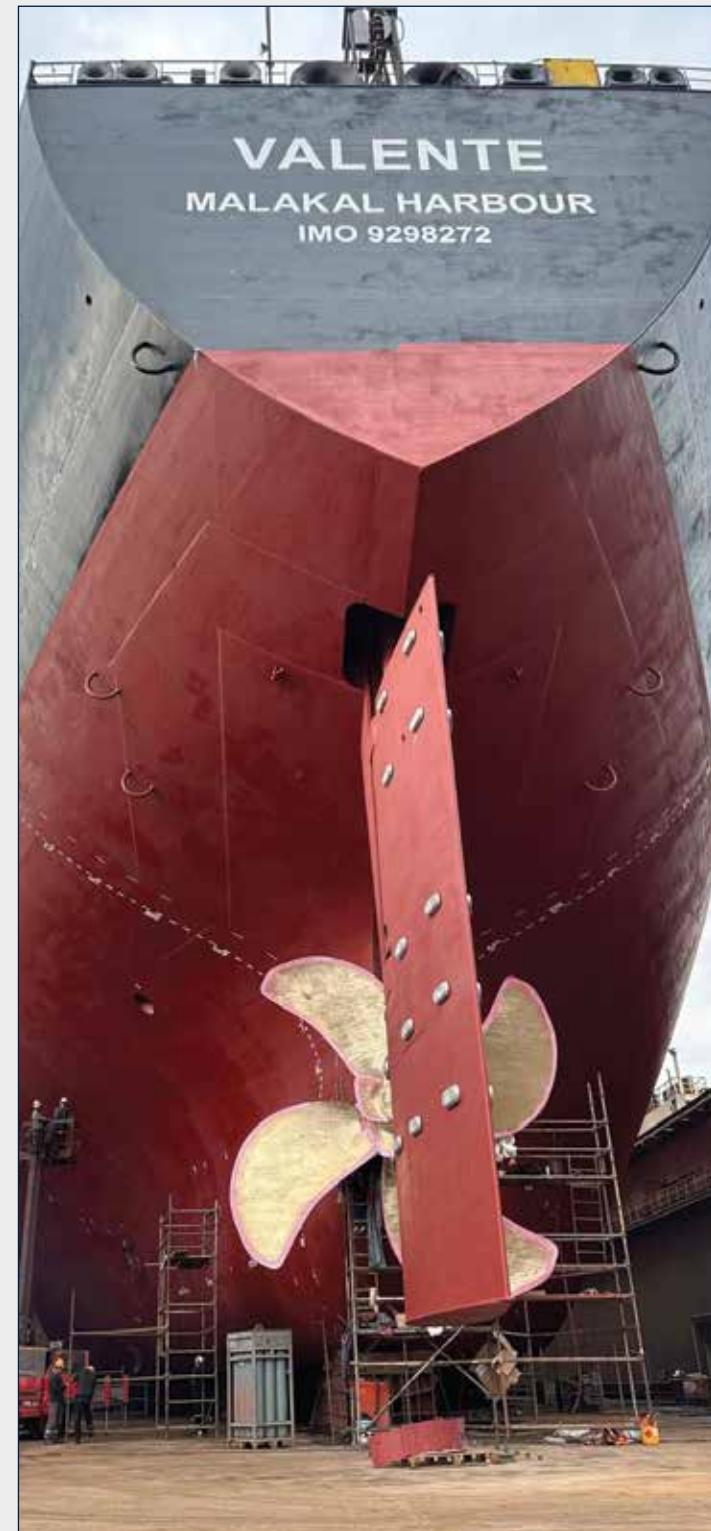
FULL SCOPE REPAIR SERVICE

Drydock and Ship Repair Services

NED MARINE is proud to offer comprehensive drydock and ship repair services in Turkey. With our expertise and commitment to quality, we aim to provide tailored solutions to shipowners and operators, ensuring the efficient maintenance and repair of vessels. With more than 80 shipyards, 5000 authorized services and countless subcontractors Turkey is one of the leading countries in the world in shipbuilding, repair and conversion projects.

- 7 / 24 Ambitious to Repair
- Cost effective & high quality operations
- Prompt delivery time
- Arranging all our operations with our own staff
- High level of safety





DOCKING ACTIVITES

Drydock is one of the ship repair solutions, provided by NED MARINE and our partners, of course Mechanical, Electrical, Navigation jobs can be done separately anytime. Depending on needed capacity and shipowners preferences, we provide dock space accordingly

Drydock services include preliminary docking routine, such as:

- Preparing vessel for dry dock
- Surface treatment
- Insulation
- Piping and valve works
- Blasting
- Steel works
- Painting
- Interior decoration & outfitting.





MECHANICAL WORKS


Our expert technicians are proficient in main engine overhauling, auxiliary engine overhauling, and all major mechanical works to ensure optimal engine performance

- Main Engine
- ME Auxiliary Equipments in ER
- Miscellaneous in Engine Room
- Auxiliary Diesel Engine
- Auxiliary Boiler
- Heat Exchangers
- Auxiliary Equipments in ER



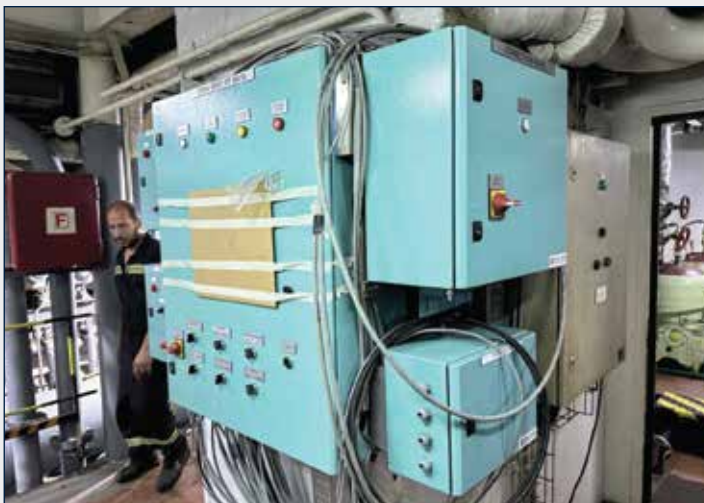






ELECTRICAL WORKS

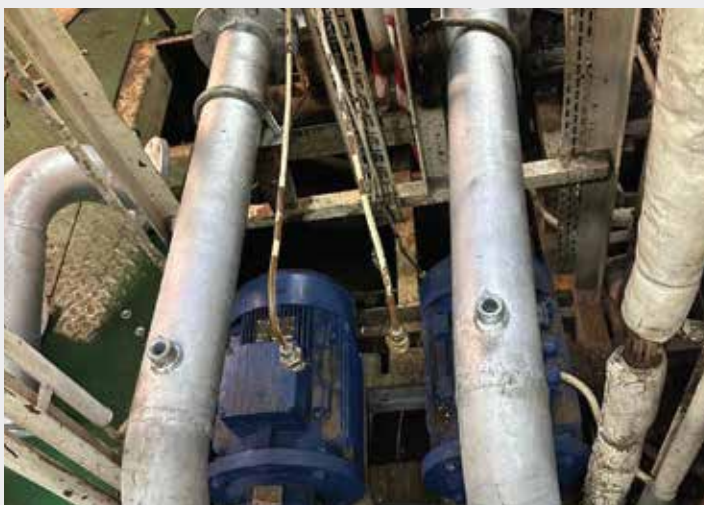
- Auxiliary Pumps
- Megger Readings
- Electric Motor, Alternator
- Switchboard Maintenance
- Heater
- Cable Installation
- Ventilation Fan and Blowers
- Speed Log
- Radars
- Gyro Compass
- Autopilot and Rudder angle transmitters
- Echo Sounder
- Radio Survey
- Alarm Systems





PIPE WORKS

We manufacture and repair pipes of all sizes and qualities. we can also perform maintenance and testing off all types in our workshop. According to the drawings given by the shipowner, we make the pre-production of all system in accordance with rules of IMO and classification societies and make it ready for installation on he ship.





PROPELLER SHAFT

Propeller Shaft & Rudder System

Regarding propulsion system, top priority of Ned Marine is sharing extensive knowledge and offering fast & unique solutions to customers on the whole kind of processes. Despite the fact that propulsion system shall be varied vessel by vessel, professional team of Ned Marine evaluate the system comprehensively to fulfill entire requirements and expectations in distinctive and complex cases.





SCHOTTEL SERVICE

NED Marine provides comprehensive propulsion thruster service, overhaul, repair, and troubleshooting for your vessel's thrusters. We always begin with a free consultation, offering you advice to make sure you can make an educated decision on what you need.





HATCH COVER

Heavy Operations

All heavy equipment on the vessel is handled using cranes with capacities ranging from 10 to 100 tons

- Hatch Cover
- Bulkheads
- Gantry Cranes
- Blocks
- Vessel Equipments
- Etc...





STEEL WORKS



- General Steel Repair
- Light Steel Works
- Renewal of handrails and stanchions
- Welding Inspections and Measurements
- Welding Renewals
- Pressure Test of Tanks
- Mechanical Cleaning & Painting of Renewed Steels
- Ultrasonic Thickness Gauging
- Production of Foundations
- Production of Blocks
- Cutting with CNC Machine



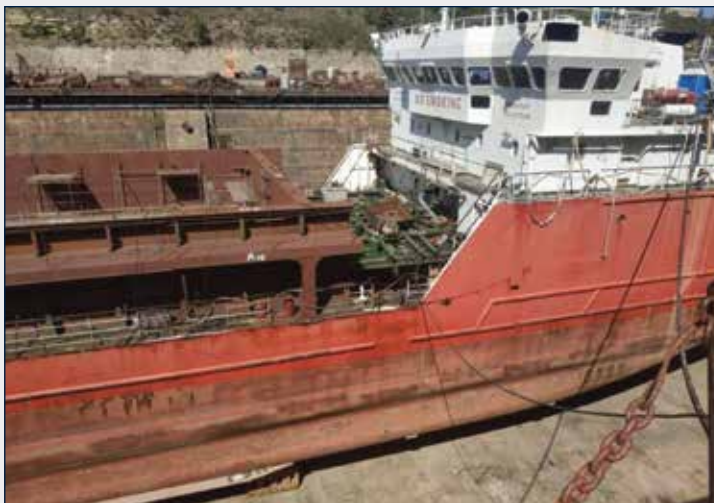
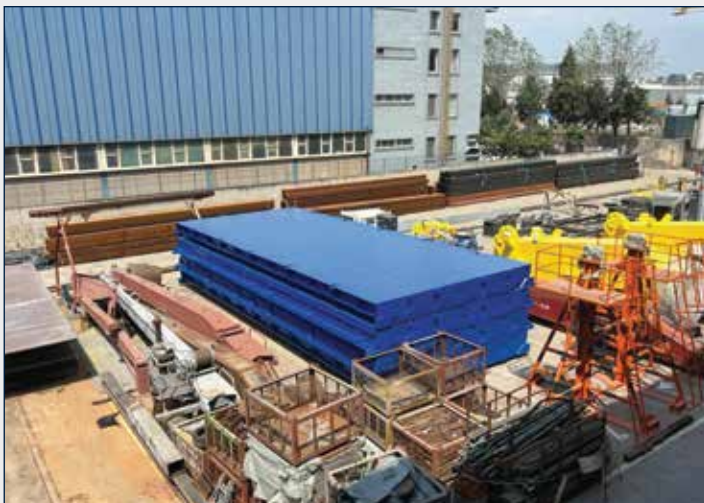


CONVERSION PROJECT

Modernization and conversion for existing vessels

Ned Marine modernization projects will extend a vessel's life cycle, adapt its business use case, increase its capacity, or ensure compliance with the latest regulations including carbon and NOx emissions reduction.

Whatever the reason for modernization and conversion, we have a wealth of knowledge in repurposing vessels for new markets and missions. We fine tune your vessel to achieve the performance and compliance required by the business case, within budget and with minimal downtime.





OUTFITTING WORKS

Outfitting Works & Other Works

- Light steel Works
- Tank Manhole Open/Close
- Anodes Renew
- Measurements Anchor & Anchor Chain
- Cleaning Chain Locker
- Bottom Plugs
- Tank Cleaning Works
- Disposal Service
- Production of foundations
- Renewal of hatch Cover Rubber
- Hatch Coaming Works
- BWTS Installation





Main Dimensions

Loa :11.90

B :4.02

D :1.72

T :0.90

Steel Construction A Grade Marine

Main Engines:2 x 326 Hp

Gearbox:3\1



Main Dimensions
 Loa :11.90
 B :4.02
 D :1.72
 T :0.90
 Steel Construction A Grade Marine
 Main Engines:2 x 326 Hp
 Gearbox:3/1



Main Dimensions
 Loa :11.90
 B :4.02
 D :1.72
 T :0.90
 Steel Construction A Grade Marine
 Main Engines:2 x 326 Hp
 Gearbox:3/1



NEW BUILDING

Service & Tug Boat Building

Register-approved boats designed to perform various tasks at the highest level in inland seas and ports



Main Dimensions
 Loa :11.90
 B :4.02
 D :1.72
 T :0.90
 Steel Construction A Grade Marine
 Main Engines:2 x 326 Hp
 Gearbox:3/1



Main Dimensions
 Loa :11.90
 B :4.02
 D :1.72
 T :0.90
 Steel Construction A Grade Marine
 Main Engines:2 x 326 Hp
 Gearbox:3/1



Main Dimensions
 Loa :11.90
 B :4.02
 D :1.72
 T :0.90
 Steel Construction A Grade Marine
 Main Engines:2 x 326 Hp
 Gearbox:3/1







marinened.com

🏠 Evliya Çelebi Mahallesi Küme Sokak
Tuzla Ticaret Merkezi B Blok No: 2
Kat: 1 D: 6 Tuzla - İstanbul / TÜRKİYE

⚙️ Yalova Marin Sanayi Sitesi Workshop

☎️ +90 532 668 38 11
+90 532 355 41 33

✉️ repair@marinened.com